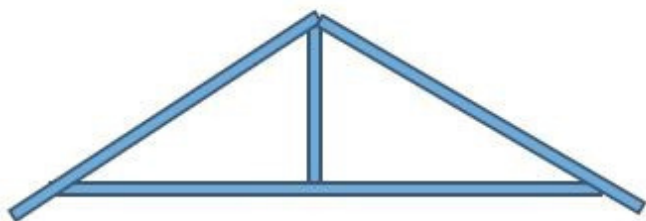


Types of roof trusses to consider when house building

If you are considering building a house using timber frames, it's worth considering how the roof space will be used before the design stage. Roof space can be used for additional rooms such as a bedroom, an office, a playroom or for organised storage space. If you're planning to install solar panels, you will need to allow space for a storage battery.

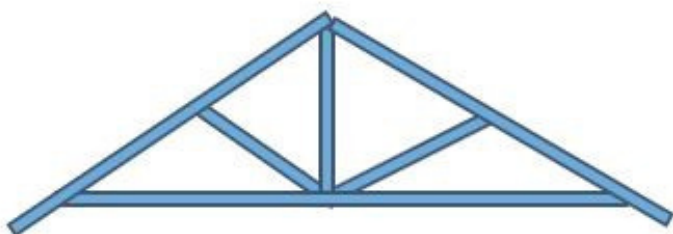
Even if you're not yet sure how the space will be used, designing the space with the right attic truss will give you options for the future. The following trusses are the most common types used for house building.

King Post Truss



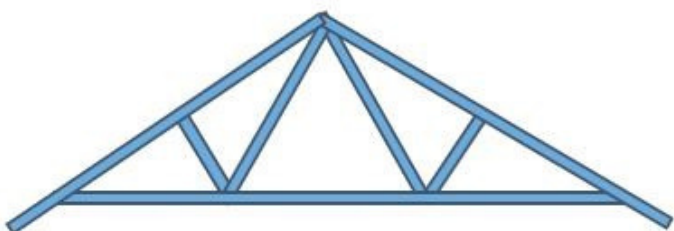
Used for small houses and garage roofs up to 4.5M

Queen Post Truss



Used for the majority of UK houses up to 6M

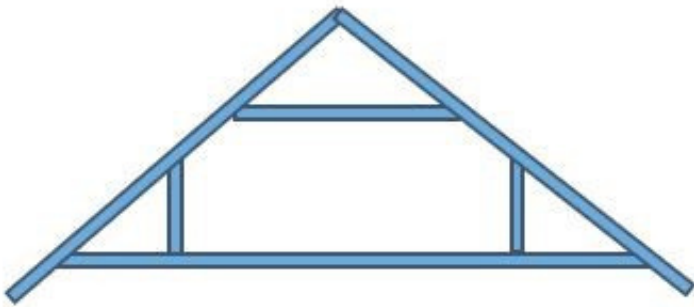
Fink Truss



Commonly used for spans up to 11M. Large enough to house a water tank or solar battery

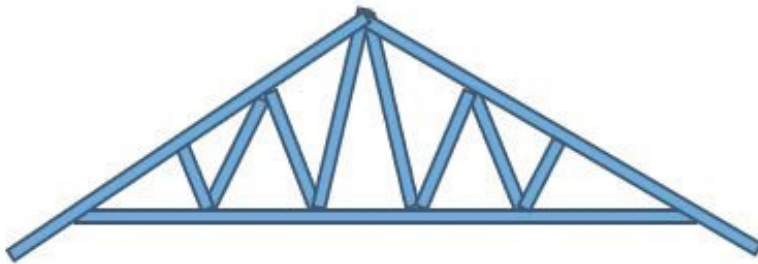
Roof trusses for house building / continued

Attic Truss



Designed to create a central useable room space

Double-W Truss



Used mostly for large properties or commercial buildings spanning 16M

There are many other types of roof trusses including mono trusses for hip ends and corridors and cantilever trusses to support balconies.

Please get in touch with Target Timber to discuss which roof truss design is right for your project or to find out how to best utilise the roof space if you are planning to build a timber frame house.